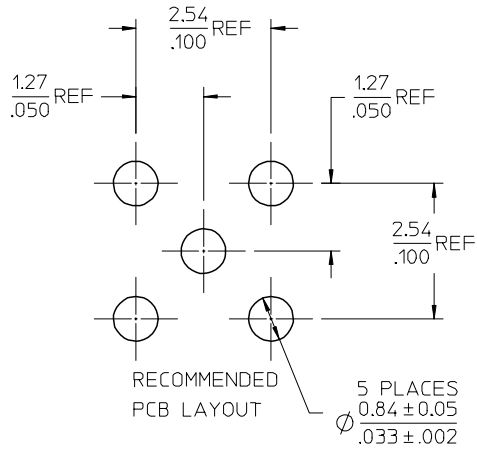
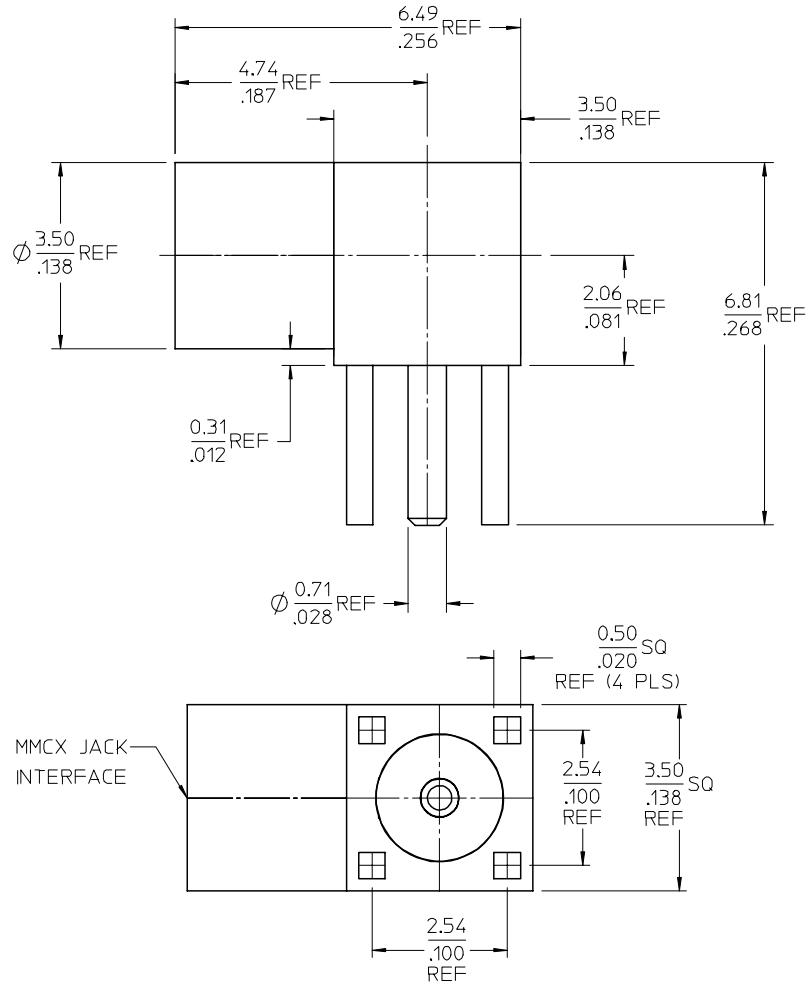
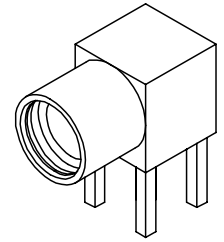


MATERIALS AND FINISHES

BODY BRASS
PLATED GOLD

CENTER CONTACT BERYLLIUM COPPER
PLATED GOLD

INSULATOR TEFLON



MMCX JACK
INTERFACE

ES-73599-0000-016	INTERFACE
SPECIFICATION	DESCRIPTION

73415-1002	P/N 73415-1001, ONE PER BAG
73415-1001	PER COMMERCIAL REQUIREMENTS, BULK
73415-1000	PER MILITARY REQUIREMENTS, BULK
PART NUMBER	PLATING AND PACKAGING

CHG: ADDED P/N
73415-1002
FC NO: URF 2007-0264
DRAWN: IFLAHERY 2007/01/09
CHKD: SHAH 2007/01/09
APPR: JIMENER 2007/01/09
REV D1

QUALITY SYMBOLS
=0
=0

GENERAL TOLERANCES (UNLESS SPECIFIED)	
mm	INCH
4 PLACES ± .010	± .0004
3 PLACES ± .015	± .0006
2 PLACES ± .020	± .0008
1 PLACE ± .030	± .0012
ANGULAR ± 2 °	
DRAFT WHERE APPLICABLE MUST REMAIN WITHIN DIMENSIONS	

DIMENSION STYLE	
MM/IN	
DRAWN BY	DATE
JM	2005/07/22
CHECKED BY	DATE
JM	2005/07/22
APPROVED BY	DATE
JDW	2005/07/22
MATERIAL NO.	DOCUMENT NO.
SEE TABLE	SD-73415-100
SIZE C	THIS DRAWING CONTAINS INFORMATION THAT IS PROPRIETARY TO MOLEX INCORPORATED AND SHOULD NOT BE USED WITHOUT WRITTEN PERMISSION

SCALE	DESIGN UNITS	THIRD ANGLE PROJECTION
	METRIC	
MMCX JACK, R/A, PCB 50 OHMS MMCX-J/PCB		
MOLEX INCORPORATED		
SHEET NO.	1 OF 1	